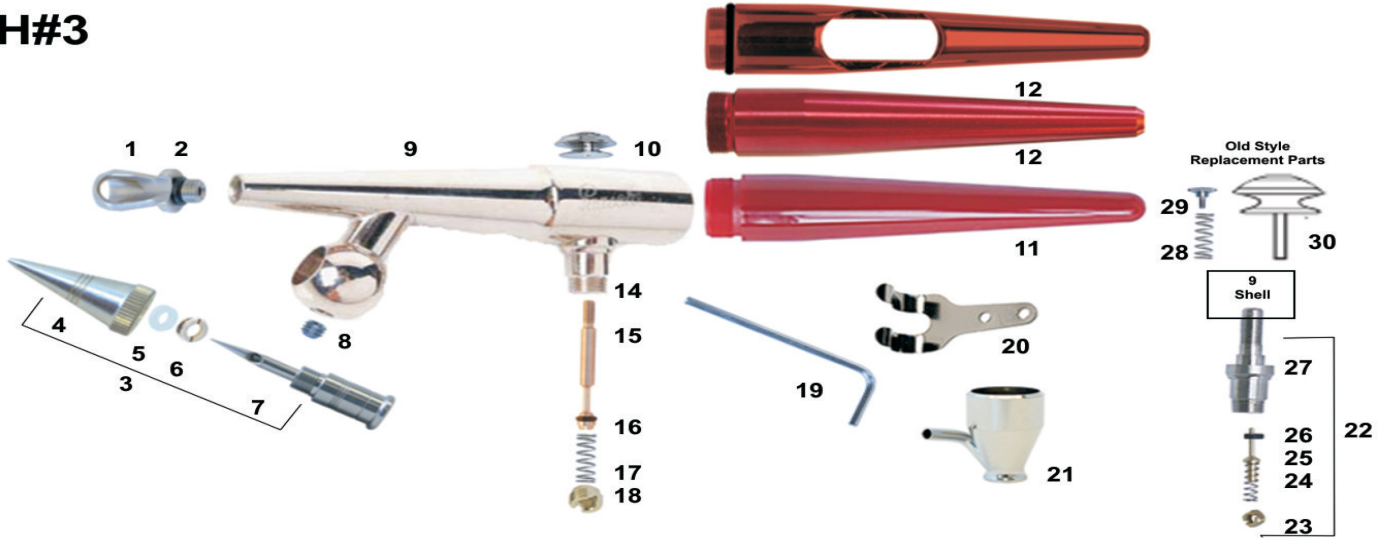


Paasche H#3 Series Airbrush Siphon Feed Single Action

Illustrated Parts Listing

H#3



Part No.	Description
1	HC-1-3 Aircap w/O-ring #1,#3
2	3A4 O-ring (pack of 6)
3	H-3 Color Adjusting Part(4-7) #3
4	HT-3 Tip #3
5	H-185 Packing
6	H-184 Packing Nut
7	HN-1-3 Needle #1, #3
8	H-153 Set Screw
9	H-150N Shell (w/H-128A Valve Casing)
10	H-155 Finger Button
11	H-143 Handle (Nylon)
14/27	H-128A Valve Casing
15	H-192A Plunger w/A53
16	A-53 Valve Washer (Pack of 6)
17/24	A-22 Valve Spring
18	A-23R Air Valve Nut
19	F-186 Wrench
20	A-34 Hanger
21	H-1/4OZ 1/4 oz Color Cup

Optional

12	HVL-200 Metal Handle (Aluminum)
12	HVL-202 Metal Handle w/Cut Out (Aluminum)

N/A [H Series Bottle Assemblies](#)

Old Style Parts

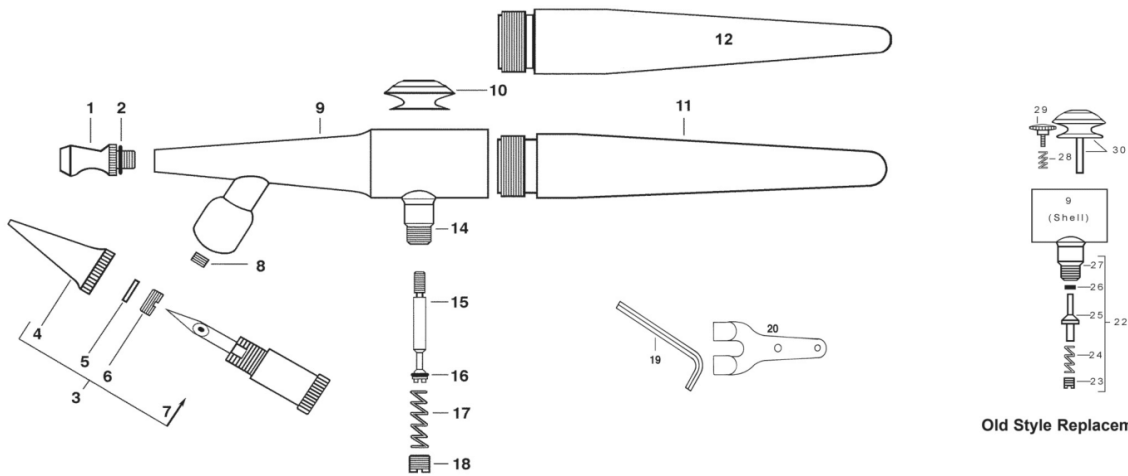
Part No.	Description
22	H175A Air Valve Assemble
23	A-23R Air Valve Nut
25	H-21A Valve Plunger
26	A-52 Value Was
28	A-143 Needle Guide Spring
29	H-156 Stipple Adjuster
30	H-157 Finger Lever Assemble

To Change H#3 to H#1 change the following Parts

4	HT-1	Tip #1
or		
3	H-1	Color Adjusting Part(4-7) #1

To Change H#3 to H#5 change the following Parts

1	HC-5	Aircap w/O-ring #5
4	HT-5	Tip #5
7	HN-5	Needle #5
or		
3	H-5	Color Adjusting Part(4-7) #5



Old Style Replacement Parts

H - AIRBRUSH MODEL REPLACEMENT PARTS

#	Part No.	Description
1.	HC-1-3,5	Aircap w/ O-ring (Select Size)
2.	3A-4	"O" Ring (Pack of 6)
3.	H-1,3,5	Color Adjusting Part (Select Size)
4.	HT-1,3,5	Tip (Select Size)
5.	H-185	Packing
6.	H-184	Packing Nut
7.	HN-1-3,5	Needle (Select Size)
8.	H-153	Set Screw
9.	H-150N	Shell (Includes H-128A)
10.	H-155	Finger Button
11.	H-143	Handle (Nylon)
12.	HVL-200	Metal Handle (Aluminum - optional)
14.	H-128A	Valve Casing
15.	H-192A	Valve Plunger w/ A-53
16.	A-53	Valve Washer (Pack of 6)
17.	A-22	Valve Spring
18.	A-23R	Air Valve Nut
19.	F-186	Wrench
20.	A-34	Hanger

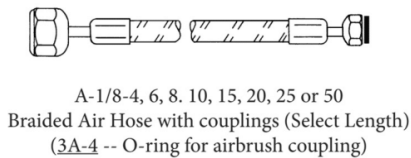


H - Old Style Replacement Parts

22.	H-175A	Air Valve Assembly
23.	A-23R	Air Valve Nut
24.	A-22	Valve Spring
25.	H-21A	Valve Plunger
26.	A-52	Valve Washer (Pack of 6)
27.	H-128A	Valve Casing
28.	A-143	Needle Guide Spring
29.	H-156	Stipple Adjuster
30.	H-157	Finger Lever Assembly



The BA bottle assemblies are a new cover configuration and all use plastic bottle. The 2P and 4P are narrow neck and work with most airbrush paint bottles like Createx and Paasche



WARNING: Spray materials may be harmful if inhaled or allowed to come into contact with the skin or eyes. Consult the product label and Material Safety Data Sheet supplied for the spray material. Follow all safety precautions.
CAUTION: Well Ventilated Area Required to remove fumes, dust or overspray. **Maximum Air Pressure 75 P.S.I.**

For Multi-Language Manuals Go To: www.paascheairbrush.com