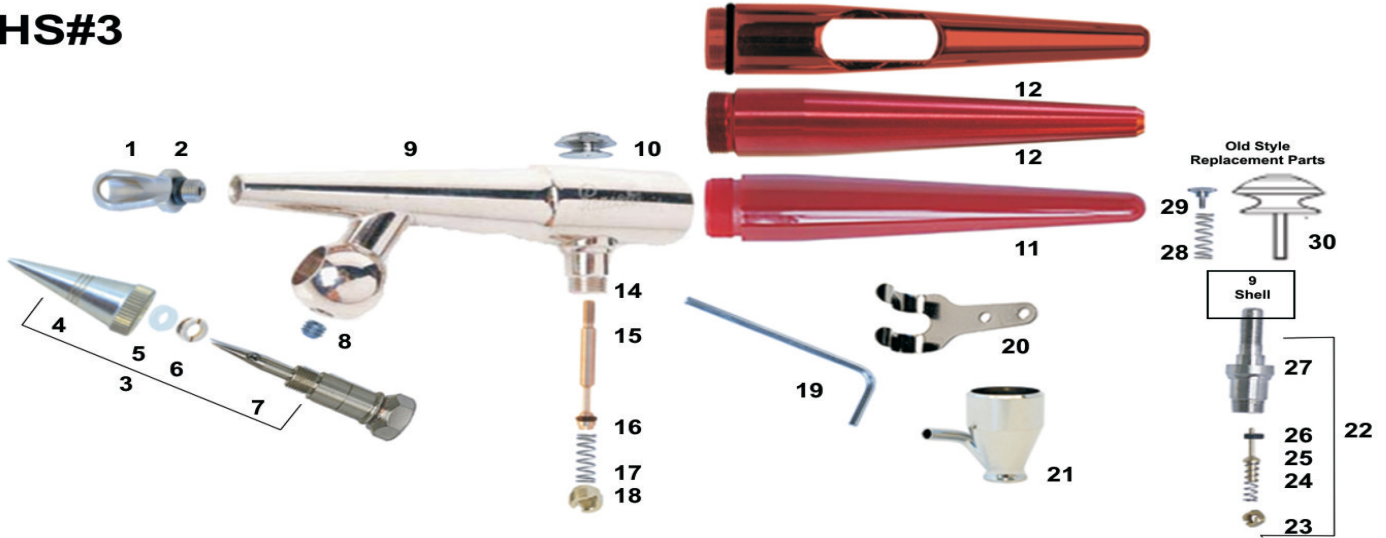


Paasche HS#3 Series Airbrush Siphon Feed Single Action

Illustrated Parts Listing

HS#3



Part No. Description

1	HC-1-3	Aircap w/O-ring #1,#3
2	3A4	O-ring (pack of 6)
3	HS-3	Color Adjusting Part(4-7) #3
4	HT-3	Tip #3
5	H-185	Packing
6	H-184	Packing Nut
7	HNS-1-3	Needle #1, #3
8	H-153	Set Screw
9	H-150N	Shell (w/H-128A Valve Casing)
10	H-155	Finger Button
11	H-143	Handle (Nylon)
14/27	H-128A	Valve Casing
15	H-192A	Plunger w/A53
16	A-53	Valve Washer (Pack of 6)
17/24	A-22	Valve Spring
18	A-23R	Air Valve Nut
19	F-186	Wrench
20	A-34	Hanger
21	H-1/4OZ	1/4 oz Color Cup

Optional

12	HVL-200	Metal Handle (Aluminum)
12	HVL-202	Metal Handle w/Cut Out (Aluminum)

N/A [HS Series Bottle Assembles](#)

Old Style Parts

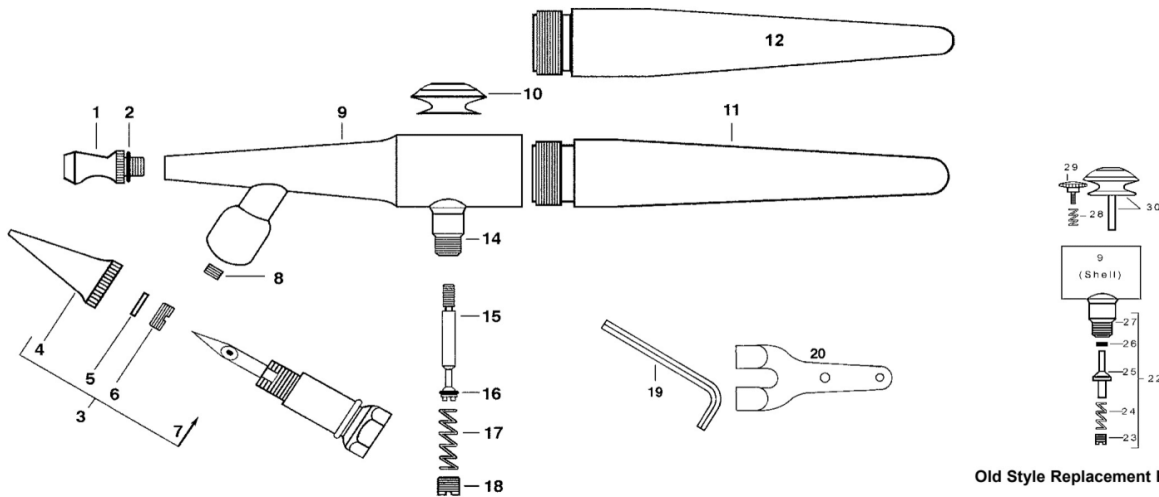
Part No.	Description	
22	H175A	Air Valve Assemble
23	A-23R	Air Valve Nut
25	H-21A	Valve Plunger
26	A-52	Value Was
28	A-143	Needle Guide Spring
29	H-156	Stipple Adjuster
30	H-157	Finger Lever Assemble

To Change HS#3 to HS#1 change the following Parts

4	HTS-1	Tip #1
or		
3	HS-1	Color Adjusting Part(4-7) #1

To Change HS#3 to HS#5 change the following Parts

1	HC-5	Aircap w/O-ring #5
4	HT-5	Tip #5
7	HNS-5	Needle #5
or		
3	HS-5	Color Adjusting Part(4-7) #5



Old Style Replacement Parts

HS - AIRBRUSH MODEL REPLACEMENT PARTS

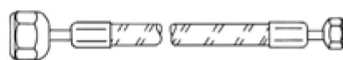
Part No. Description

1. **HC-1-3,5** Aircap w/ O-ring (Select Size)
2. **3A-4** "O" Ring (Pack of 6)
3. **HS-1,3,5** Color Adjusting Part (Select Size)
4. **HT-1,3,5** Tip (Select Size)
5. **H-185** Packing
6. **H-184** Packing Nut
7. **HNS-1-3,5** Needle (Select Size)
8. **H-153** Set Screw
9. **H-150N** Shell (Includes H-128A)
10. **H-155** Finger Button
11. **H-143** Handle (Nylon)
12. **HVL-200** Metal Handle (Aluminum - optional)
14. **H-128A** Valve Casing
15. **H-192A** Valve Plunger w/ A-53
16. **A-53** Valve Washer (Pack of 6)
17. **A-22** Valve Spring
18. **A-23R** Air Valve Nut
19. **F-186** Wrench
20. **A-34** Hanger



HS - Old Style Replacement Parts

22. **H-175A** Air Valve Assembly
23. **A-23R** Air Valve Nut
24. **A-22** Valve Spring
25. **H-21A** Valve Plunger
26. **A-52** Valve Washer (Pack of 6)
27. **H-128A** Valve Casing
28. **A-143** Needle Guide Spring
29. **H-156** Stipple Adjuster
30. **H-157** Finger Lever Assembly



A-1/8-4, 6, 8, 10, 15, 20, 25 or 50
Braided Air Hose with couplings (Select Length)
(3A-4 O-ring for airbrush coupling)

Paasche Airbrush Co.
9511 58th Place Kenosha, WI 53144
Phone: 773/867-9191 Email: info@paascheairbrush.com
Website: Paascheairbrush.com

WARNING: Spray materials may be harmful if inhaled or allowed to come into contact with the skin or eyes. Consult the product label and Material Safety Data Sheet supplied for the spray material. Follow all safety precautions. **CAUTION:** Well Ventilated Area Required to remove fumes, dust or overspray. **Maximum Air Pressure 75 P.S.I.**

For Multi-Language Manuals Go To: www.paascheairbrush.com

Available from: *Dixie Art Airbrush* • www.dixieart.com • 800.783-2612 / 504.466.6556